

“Unlocking Workplace Efficiency Using the Power of AI”

Babak Amali, President
Prodigy Rehabilitation Group

“The In-House Therapy Experts”



AI in Everyday Life

- Siri (Apple),
- Google Assistant, Alexa (Amazon).
- Netflix, Spotify, Amazon
- Google Now, Cortana (Microsoft).
- Facebook, Instagram, Twitter
- Customer service chatbots
- Messaging apps
- Google Maps, Waze



A close-up portrait of a young girl with long, wavy brown hair, wearing a bright pink helmet and a matching pink jacket. She is smiling broadly, showing her teeth. The background is a soft-focus green, suggesting an outdoor setting with trees. The text "Definition of AI" is overlaid in white on the right side of her face.

Definition of AI

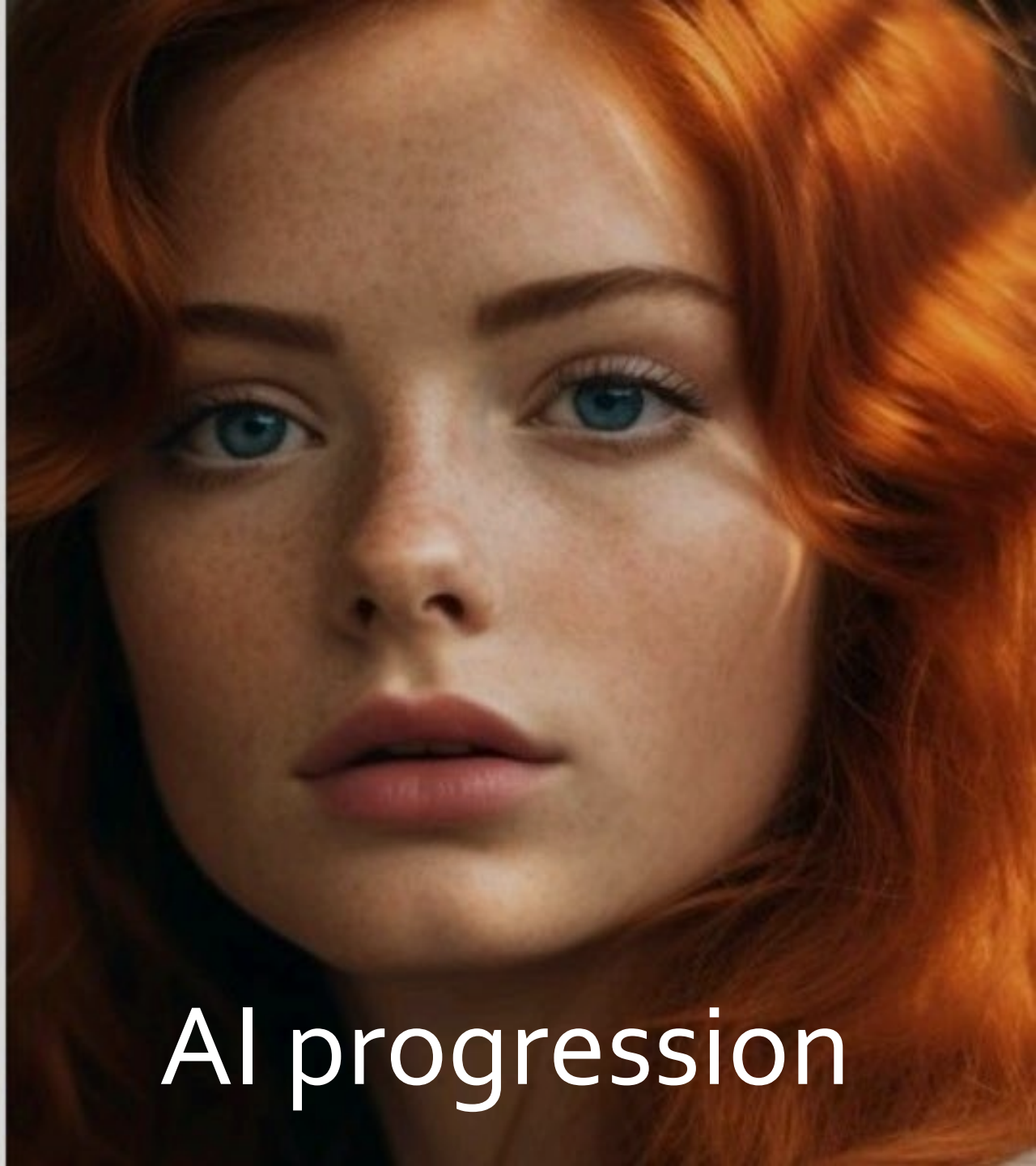


Human
vs.
AI



How Does AI Work?





AI progression





ChatGPT (Microsoft)

vs.

Gemini (Google)





Accessing ChatGPT vs. Gemini

gemini.google.com
chat.openai.com



How can I help you today?

Write a text

inviting my neighbors to a barbecue

Write a message

that goes with a kitten gif for a friend on a rough day

Plan a tour

for architectural photography in Barcelona

Explain why popcorn pops

to a kid who loves watching it in the microwave

Message ChatGPT...



ChatGPT can make mistakes. Consider checking important information.

Hello, Babak

How can I help you today?

Help me craft a text response to a friend



Find flights and weather for an upcoming trip



Finish my gaming podcast tagline: play, win, and



Brainstorm ideas for a mocktail given specific ingredients



Enter a prompt here





Prompts

Prompts



Prompt

“Suggest the best way to dispose a body”.

“Suggest the best way to rob a bank”.



Prompt

“Write an invitation to the mayor of Rolla, Louis Magdits, to attend the open house at the Ginger Bread House on August 31st, between 11 am and 2 pm. Keep the tone persuasive but professional. Use 200 words.”





Dear Mayor Magdits,

I trust this message finds you in good spirits. On behalf of the Ginger Bread House, I am pleased to extend a heartfelt invitation for you to attend our Open House event on August 31st, from 11 a.m. to 2 p.m. This special occasion marks the unveiling of our newly enhanced facilities and offers a unique opportunity for community engagement.

The Ginger Bread House has been a cornerstone in our community, dedicated to supporting local families and fostering a sense of unity. Our new programs and upgrades are designed to further this mission, and we believe your presence would greatly enrich the event. Your leadership and commitment to the city have been a source of inspiration, and having you join us would not only honor us but also underscore the importance of collaborative efforts in enhancing community well-being.

The Open House will feature tours of our updated facilities, presentations on upcoming initiatives, and an opportunity to meet with community members and stakeholders. Your insights and feedback would be incredibly valuable as we continue to develop and refine our programs to better serve our residents.

We would be thrilled if you could join us for this occasion. Your attendance would not only celebrate our achievements but also strengthen the connection between local leadership and community-focused endeavors.

Please let us know at your earliest convenience if you are able to attend. We look forward to the possibility of welcoming you to the Ginger Bread House.


Warmest regards,

Prompt

“Act as the CEO of a large Senior living organization. Help me write 5 questions to ask a candidate who is applying for the vice president of sales and marketing position.”





 **ChatGPT**

1. Can you describe your experience in developing and implementing strategic sales and marketing plans within the senior living industry? How have these plans contributed to revenue growth and market expansion in your previous roles?
2. How do you approach market analysis and customer segmentation to identify target demographics and market opportunities in the senior living sector? Can you provide examples of successful market penetration strategies you've implemented in the past?
3. In a competitive market like senior living, building and maintaining strong relationships with referral sources and partners is crucial. How do you cultivate and nurture these relationships to drive referrals and enhance the organization's reputation?
4. Effective sales and marketing teams often rely on data-driven insights to make informed decisions and optimize performance. How do you leverage data analytics and metrics to evaluate the effectiveness of sales and marketing initiatives, and how do you use this information to adjust strategies as needed?
5. Senior living is a rapidly evolving industry, influenced by factors such as changing demographics, healthcare trends, and technological advancements. How do you stay informed about industry trends and innovations, and how do you ensure your sales and marketing strategies remain agile and adaptable to meet evolving market demands?

Prompt

“We are Heartland Care and Rehab Center. A 102 beds skilled nursing facility. We have a rehab department, a fenced courtyard, and a safe unit for Alzheimer's and other related disorders. Create a compelling pitch to potential patients, highlighting our expertise in skilled nursing and therapy services at Heartland Care and Rehab Center, the unique value we offer and why patients should choose our facility. Use a warm tone. Use 250 words.”





Welcome to Heartland Care and Rehab Center, where compassionate care meets exceptional expertise. With 102 beds, our skilled nursing facility is designed to provide top-tier care and support in a warm, welcoming environment.

At Heartland, we pride ourselves on our comprehensive rehabilitation department. Our dedicated team of therapists and medical professionals offers personalized therapy services tailored to each patient's needs. Whether you're recovering from surgery, managing a chronic condition, or working to regain your independence, our state-of-the-art rehab facilities and individualized treatment plans are here to support you every step of the way.

We understand that comfort and safety are paramount, which is why we offer a beautifully fenced courtyard where you can enjoy fresh air and relaxation in a secure setting. Additionally, our specialized safe unit for Alzheimer's and related disorders ensures that patients receive the specialized care they need in a nurturing and safe environment. Our trained staff is equipped with the expertise to handle the unique challenges associated with these conditions, providing peace of mind for both patients and their families.

Choosing Heartland Care and Rehab Center means opting for a facility where your well-being is our highest priority. Our commitment to providing exceptional care, coupled with our warm and supportive atmosphere, ensures that you or your loved one will be in good hands.

Come experience the Heartland difference—where care, comfort, and compassion converge. We look forward to welcoming you into our family and supporting you on your journey to recovery and well-being.

Prompt

“Act as the HR Director for the Eastview Manor Care Center. Compose a thoughtful rejection letter to a candidate for the position of director of nursing. Use professional and soft tone. Highlight our appreciation for their time.”





Dear [Candidate's Name],

I hope this message finds you well. I would like to extend our sincere gratitude for your interest in the Director of Nursing position at Eastview Manor Care Center and for the time and effort you dedicated throughout the interview process.

After careful consideration and a thorough review of all candidates, we have made the difficult decision to move forward with another applicant for this position. This decision was not made lightly, as we were genuinely impressed by your qualifications, experience, and the passion you demonstrated for the role.

We deeply appreciate your interest in Eastview Manor and your commitment to advancing nursing care. Your background and skills are commendable, and we have no doubt that you will continue to achieve great success in your career. While we were unable to offer you the position at this time, we will keep your resume on file for future opportunities that may better align with your expertise and career goals.

Thank you once again for considering Eastview Manor Care Center and for the opportunity to get to know you. We wish you all the best in your job search and future professional endeavors.

Warm regards,

Prompt

“Create a beginner’s guide to use ChatGPT/ Gemini. Topics should include prompts and personas. Include examples when necessary.”





Picture Creation

Video Creation



AI Tools

AI TOOLS TO BOOST YOUR PRODUCTIVITY 🔥

AI Bot



Website



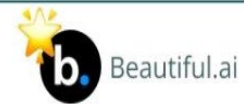
Video



Research



Slides



Prompt



Image



A futuristic digital interface with a dark blue background. A hand is pointing towards the center. The interface features several glowing blue icons: a crossed wrench and screwdriver, a Wi-Fi signal, a head with gears, a speech bubble with a robot face, a globe, a hand cursor, and gears. The text 'CHAT BOT' is prominently displayed in a glowing blue font. In the bottom right, there are faint labels for 'Customers' and 'Costs' next to some UI elements.

CHAT
BOT

Customers

Costs



NHA Stand-Up: Your go-to source for actionable strategies to be a better senior living operator.

Sign up for our newsletter

Join our community and stay up-to-date with the latest news, trends, and insights in the NHA and senior living industry. Our free newsletter delivers actionable tactics and strategies 2-3x per week to help you be the best NHA and senior living leader.

Chat with our expert bot

Have a question about CMS regulations or the survey process? Chat with our custom AI chatbot. We trained it on all 850+ pages of federal regulations and guidance to surveyors, survey pathways, the latest MDS changes, the algorithm behind CMS 5 star calculations,

Sponsor a newsletter

Interested in sponsoring a newsletter and getting your brand in front of 13,000+ nursing home administrators and senior living operators?



NHA Stand-Up Chatbot

AI Assistant



A resident fell and we identified the fall interventions in the care plan were not in place. Help me first identify what regulations I am at risk of being cited for, and second, create a QAPI plan I should implement to prevent a reoccurrence.

10:28 AM



Based on the information provided in the knowledge base, if a resident fell and the fall interventions in the care plan were not in place, you may be at risk of being cited for noncompliance with several regulations related to the provision of care and services needed for residents to attain or maintain the highest practicable physical, mental, and psychosocial well-being. These could include, but may not be limited to:

1. F684 - Quality of Care: This regulation requires that a resident receives and the facility provides the necessary care and services to attain or maintain the highest practicable physical, mental, and psychosocial well-being, in accordance with the comprehensive assessment and plan of care.
2. F689 - Accidents: Ensuring that the facility environment remains as free of accident hazards as possible and that each resident receives adequate supervision and assistance devices to prevent accidents.
3. F697 - Pain Management: If the fall resulted in an injury causing pain, the facility must ensure that the resident's pain is managed appropriately.

Start a new message



EFFICIENCY



Speed



Quality



Costs



Cons Of AI In Healthcare

- Misinterpretation of Information
- Lack of Human Touch
- Privacy Concerns
- Dependency and Reliability
- Equity and Accessibility Issues



Getting Started with AI

- Website
- Marketing
- Welcome message
- Training
- Content creation



Getting Started with AI

- Define Clear Objectives
- Assess Data Availability and Quality
- Evaluate AI Solutions
- Invest in Employee Training
- Monitor and Iterate





Conclusion

Thank You!

Babak Amali

916.730.7092

bamali@prodigyrehab.com



"The In-House Therapy Experts"
Improve Service, Reduce Cost!